



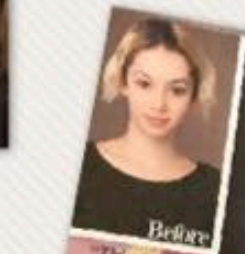
BEFORE

"Removing weight from the interior and surface layering individual pieces kept the feeling loose and soft."



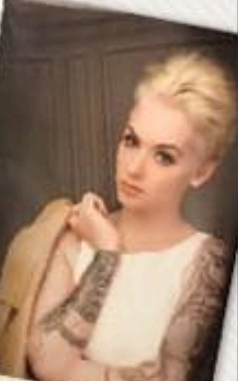
CURL FACTOR

Get the Color by These One-of-a-Kind Colorists



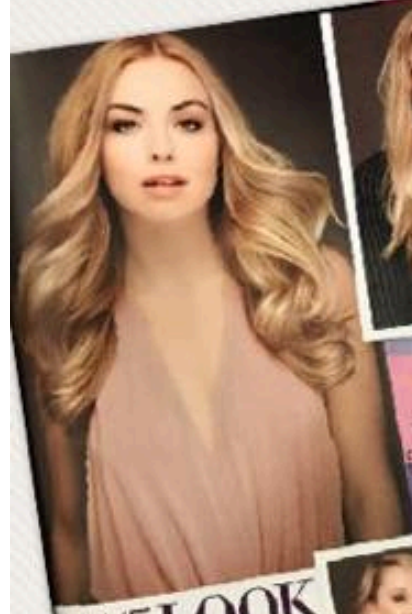
BEFORE

"This short, textured cut has tons of styling options."



DOUBLE DUTY

Get the Color by These One-of-a-Kind Colorists



BEFORE

"The goal was to simplify maintenance and give her a beautiful natural look."

LUXE LOOK

Get the Color by These One-of-a-Kind Colorists



THE LONG VERSION

The soft, balanced highlights totally play off the natural olive skin tone.

PIC-COLLAGEN